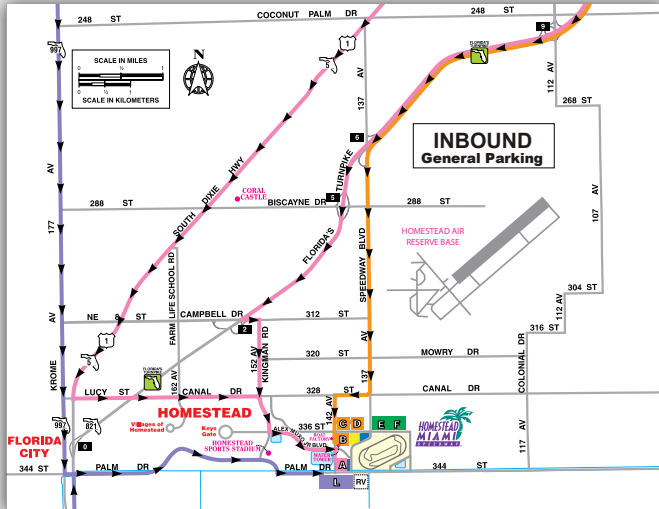


Please familiarize yourself with the color-coded traffic maps and directions outlining the major roads to the Speedway. Please note all routes are subject to change due to traffic conditions.

**INBOUND: General "FREE" Parking**

(NO PARKING PASS REQUIRED)

Routes: **Orange / Pink / Purple**



**FROM THE NORTH**

**Orange Route** (Lots B, C, D)

- Florida Turnpike South to 137th Ave (Speedway Blvd) Exit #6
- South (Left) on 137th Ave (Speedway Blvd)
- Follow signs to General Parking

**Pink Route** (Lot A)

- Florida Turnpike South to 312th St (Campbell Drive) Exit #2
- East (Right) on 312th St (Campbell Drive)
- Follow signs to General Parking

**OR**

- US-1 South
- East (Left) on 328th St (Lucy Street)
- Follow signs to General Parking

**Purple Route** (Lot L)

- 177th Ave (Krome Ave) South
- East (Left) on 344th St (Palm Drive)
- Follow signs to General Parking

**FROM THE SOUTH**

**Purple Route** (Lot L)

- US-1 North
- East (Right) on 344th St (Palm Drive)
- Follow signs to General Parking

**PARKED** Lot \_\_\_\_\_ Section \_\_\_\_\_

**DAILY RV & OVERSIZED VEHICLE PARKING:** Please follow general parking routes. Upon entering the lot you will be directed to the end of a row or to the back of the lot.

**OUTBOUND FOR GENERAL & RESERVED PARKING:**

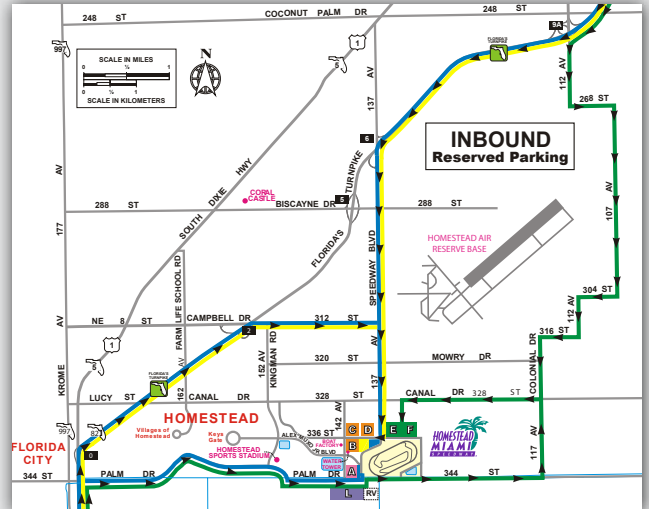
Please follow LAW ENFORCEMENT directions. For detailed outbound routes visit [THEChampionshipTrack.com](http://THEChampionshipTrack.com).

- 6:00 AM parking lots OPEN
- Overnight parking is NOT permitted
- **ARRIVE EARLY!** Allow extra time for entering and exiting the Speedway

**INBOUND: Reserved Parking**

(PARKING PASS REQUIRED) Hang pass from your mirror before arriving at track

Routes: **Yellow / Blue & Handicap / Green**



**FROM THE NORTH**

**Yellow Route**

**Blue & \*Handicap Route**

- Florida Turnpike South to 137th Ave (Speedway Blvd) Exit #6
- South (Left) on 137th Ave (Speedway Blvd)
- Follow signs to Yellow/Blue/Handicap Parking

**Green Route** (Lots E, F)

- Florida Turnpike South to 112th Ave Exit 9A
- South (Right) on 112th Ave
- East (Left) on 268th St
- South (Right) on 107th Ave
- West (Right) on 304th St
- South (Left) on 112th Ave
- West (Right) on 316th St
- South (Left) on 117th Avenue
- West (Right) on 328th Street
- Follow signs to Green Parking

**FROM THE SOUTH**

**Yellow Route**

**Blue & \*Handicap Route**

- US-1 North to Florida Turnpike North
- Florida Turnpike North to 312th St (Campbell Dr) Exit #2
- East (Right) on 312th St (Campbell Dr)
- South (Right) on 137th Ave (Speedway Blvd)
- Follow signs to Yellow/Blue/Handicap Parking

**South Blue & \*Handicap Route**

- US-1 North to 344th St (Palm Dr)
- East (Right) on 344th St (Palm Dr)
- Follow signs to South Blue/Handicap Parking

**Green Route** (Lots E, F)

- US-1 North to 344th St (Palm Dr)
- East (Right) on 344th St (Palm Dr)
- North (Left) on 117th Ave
- West (Left) on 328th St
- Follow signs to Green Parking

**\*HANDICAP PARKING:**

Must have authorized state-issued sticker, placard or license plate. (The person whom the pass was issued to must be in the vehicle.)